



Extraordinary Usi. Extraordinary innovations.



Via della Metallurgia, 14
37139 Verona - Italy
T +39.045.8510388
F +39.045.989496
www.usiitalia.com
info@usiitalia.com

USI IBERIA S.L.
Gavà - Barcelona - Spain
comercial@usiiberia.es

USI OF NORTH AMERICA, INC.
New Jersey - USA
sales.usi@usius.com

USI BRASIL
São Paulo - Brasil
usibrasil@usibrasil.com.br

Fastech_ _Synchro

Multifunctional work areas

Extraordinary Usi. Extraordinary innovations.

FASTECH and SYNCRHO can be equipped with various accessories that integrate perfectly both from the constructive and functional points of view, such as:

- Fitted walls
- Dust suction units
- Infrared dryer systems
- Lifts



More value to your body shop



Any information or data concerning characteristics and/or technical features of the products contained in brochures, pricelists, catalogues or similar documents are considered binding only if specifically referred to in the sales contract.

agenzia perdonà PD 302/15 GB - Print 08/15



Fastech_ _Synchro

Multifunctional work areas

Extraordinary Usi. Extraordinary innovations.

The USI ITALIA multifunctional work area is an essential element for increasing the productivity of the painting section of the body shop. It is a modular and highly flexible project, available in various configurations to fit perfectly all body shop spaces and specific operating and process needs.

FASTECH Traditional USI ITALIA preparation areas, compact, efficient, for one or more work places, with high performance and reduced energy consumptions. Over the years they have become the ideal equipment for all preparation operations before painting.

SYNCHRO The ideal product for equipping multifunctional work areas where vehicles are prepared for spot repairs.



BMW Alcala, Madrid - Spain



Alghanim Ind. - Kuwait



Nazarauto - Spain



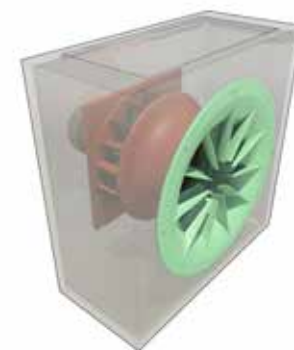
SYNCHRO DGT

SYNCHRO in the SYNCHRO with DGT version uses the same exclusive USI ITALIA technology which made the CHRONOTECH spray booth a success worldwide.

Turbofan for industrial application coupled to motor without driving elements.

Advantages:

- High efficiency with consequent energy savings
- High reliability due to absence of driving elements (belts and pulleys etc)
- No maintenance
- Constant air volume for the entire life of the filters
- Long filter duration since the fan can maintain a high air volume even with clogged filters
- Low noise due to particular and exclusive design of the fan



Direct fired burner "AIR BLUE"

Natural gas or LPG burner designed and produced by USI ITALIA with DNV certification. Advantages:

- 97% fuel consumption
- Lower fuel consumption than traditional burners with combustion chamber (up to 30%)
- Set temperature is quickly reached
- The set temperature is more stable and uniform
- Reduced paint/bake cycle time (up to 35% less)
- Increased productivity (up to 55% more)



Highly efficient heat exchanger

- Desired temperature is quickly reached
- Exclusive tear-shaped aerodynamic design
- Complete cooling of the heat exchanger surface ensures long life of unit
- High combustion efficiency

Fastech_ _Synchro

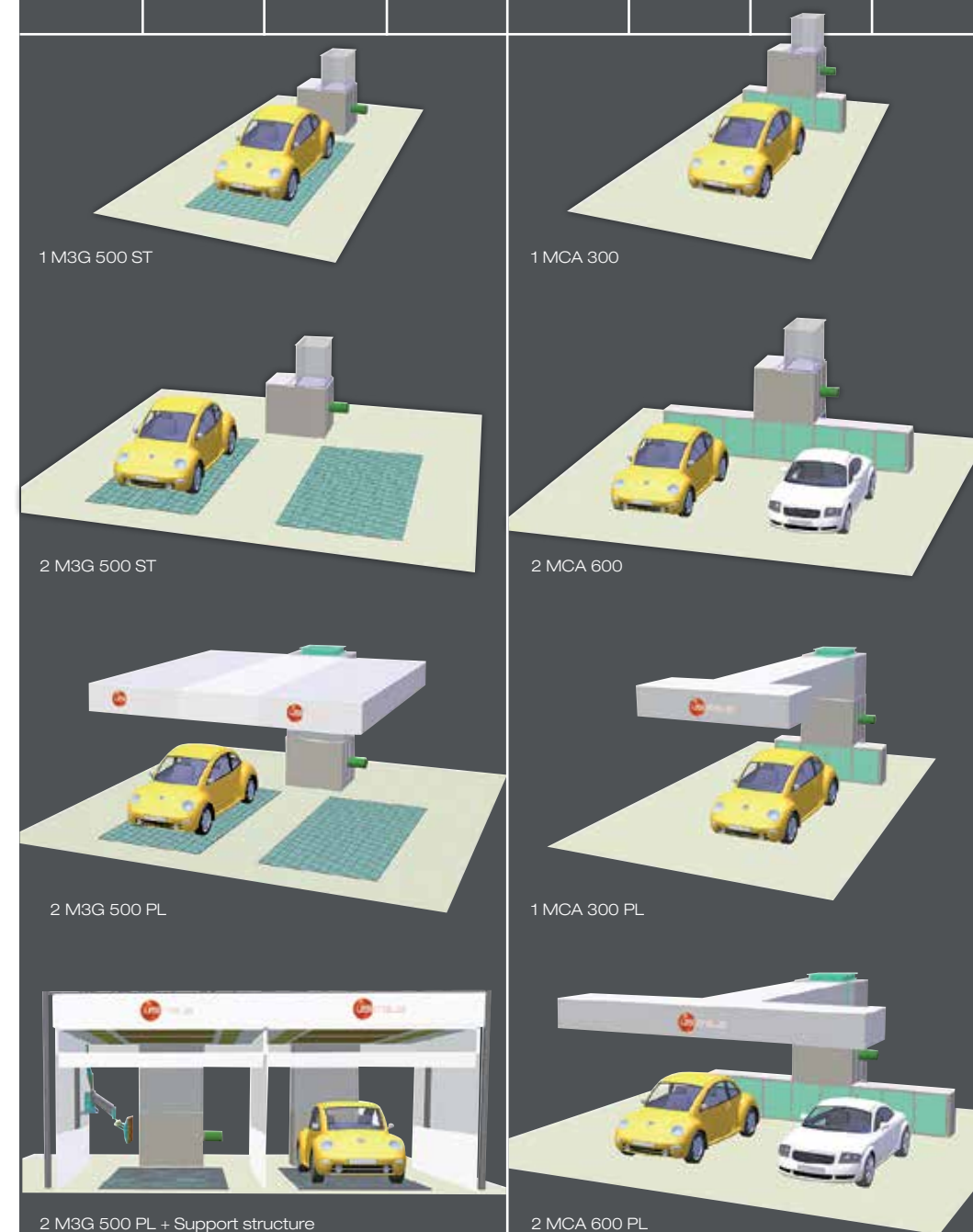
express the best of USI ITALIA technology



Safe and uniform light

Large surface reflectors eliminate shadow and glare, providing uniform light distribution without altering colours. The high efficiency XL neon tubes reduce electric consumptions to a minimum. Hinged frames make fluorescent tube replacement quick and simple.

Fastech & Synchro Solutions



1 M3G 500 ST

1 MCA 300

2 M3G 500 ST

2 MCA 600

2 M3G 500 PL

1 MCA 300 PL

2 M3G 500 PL + Support structure

2 MCA 600 PL